



PHILLIPSTON TOWN COMMON

Conceptual Design Studies

June 25, 2025

TO DEVELOP CONCEPTUAL DESIGN STUDIES OF SITE AND LANDSCAPE ENHANCEMENTS TO THE COMMON AND SURROUNDING ROADWAYS.

TO IMPROVE THE AESTHETIC AND UTILITY OF THE COMMON TO SUPPORT TOWN PROGRAMS AND EVENT

TO APPROPRIATELY REPRESENT THE HEART OF PHILLIPSTON

ANALYSIS

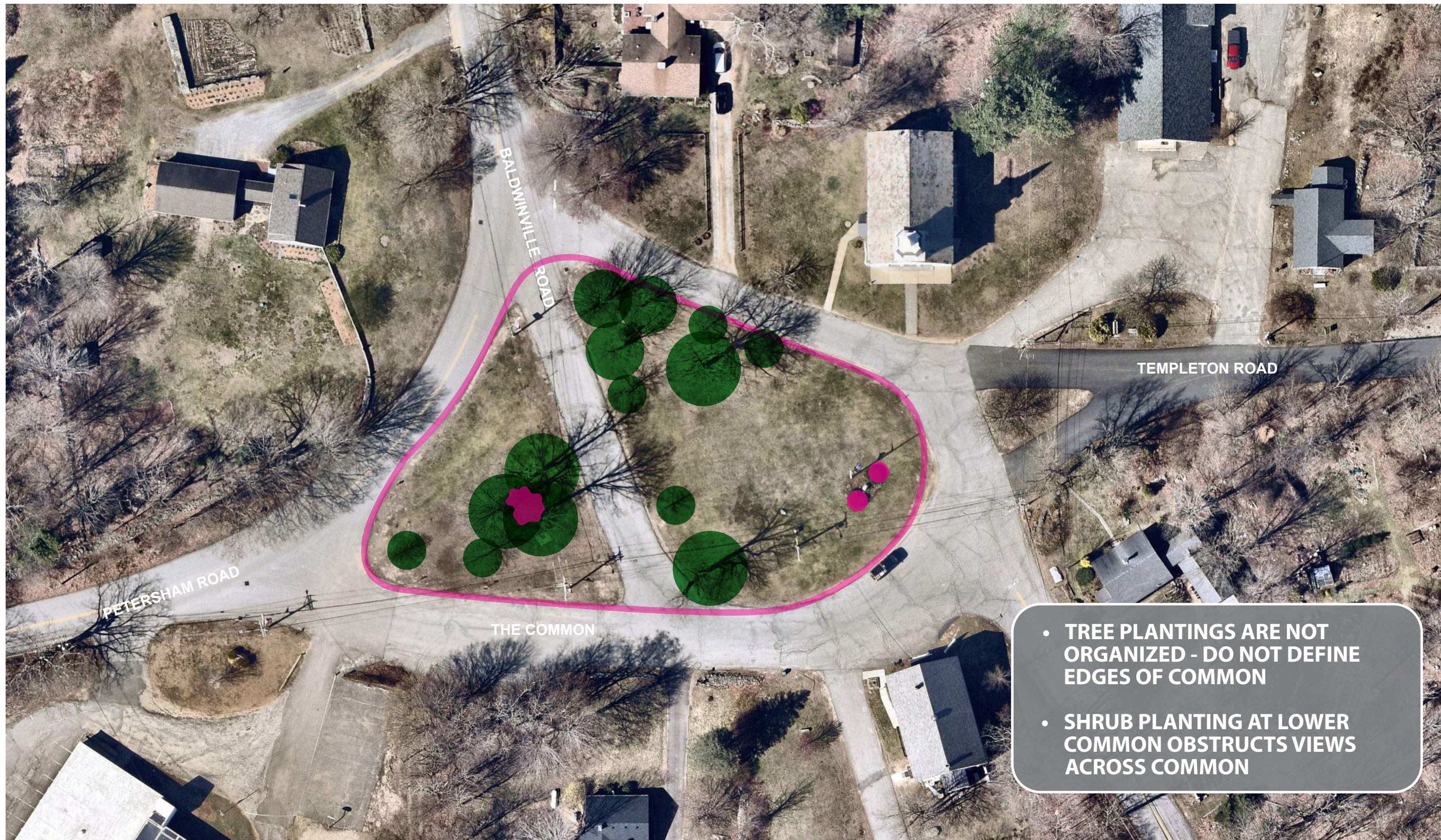
- CONFIRM STUDY AREA
- PEDESTRIAN CIRCULATION
- PLANTING
- UTILITIES
- ROADWAY WIDTHS AND LAYOUT
- VEHICULAR CIRCULATION AND PARKING
- SIGNAGE, MONUMENTS AND MARKERS
- SITE AMENITIES AND INFRASTRUCURE



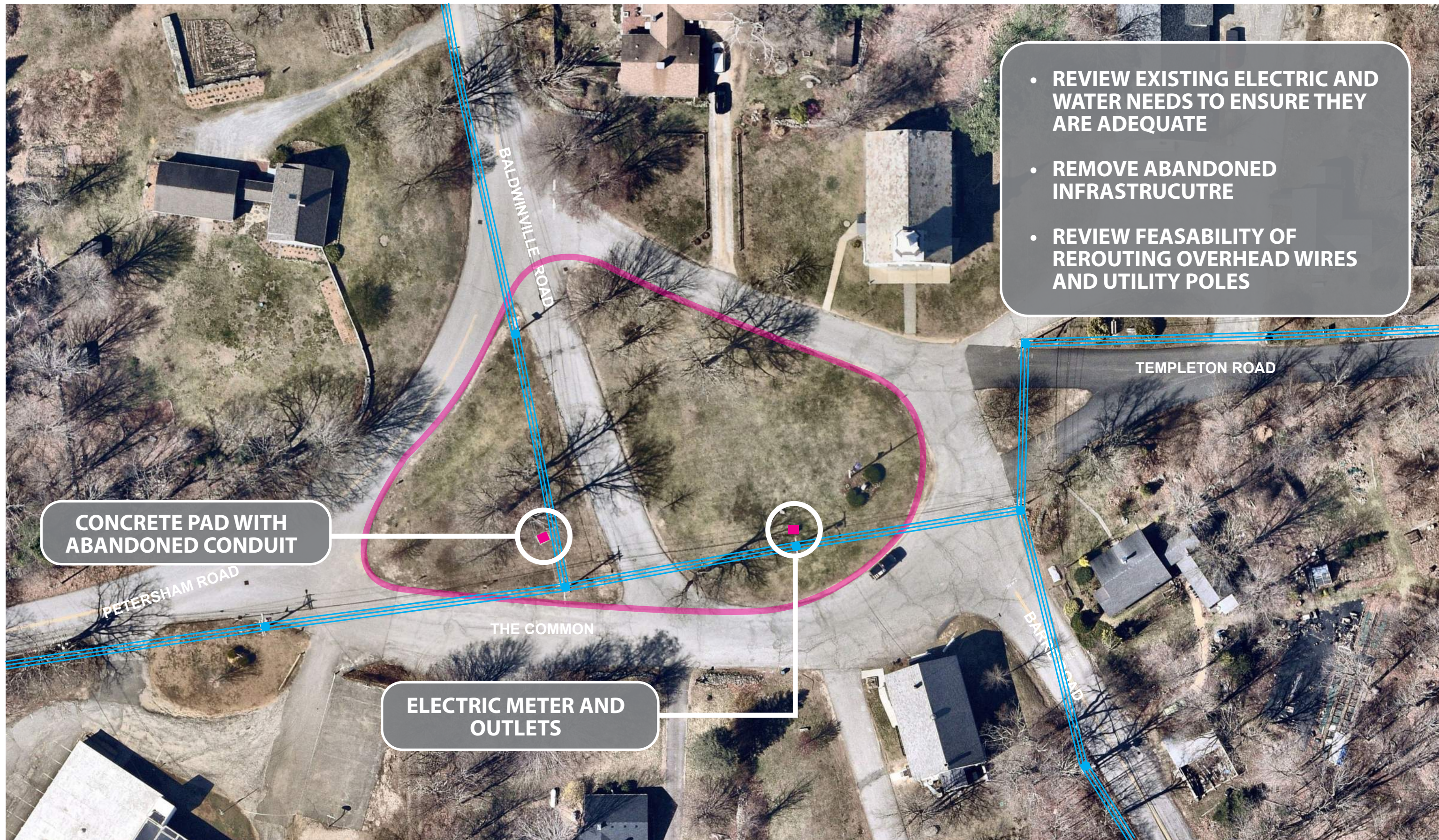
PHILLIPSTON COMMON DESIGN STUDIES
FOCAL POINT







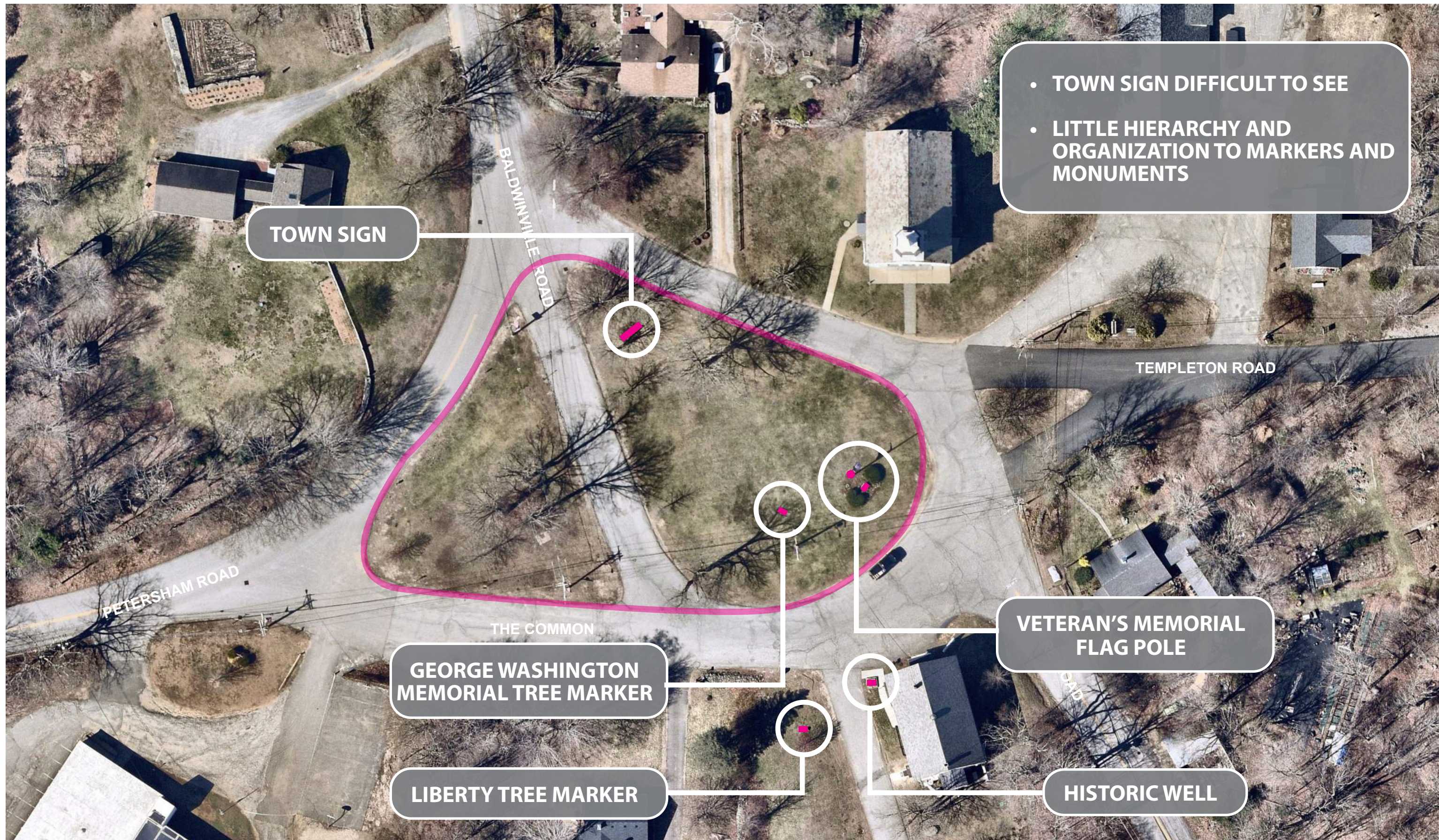
- TREE PLANTINGS ARE NOT ORGANIZED - DO NOT DEFINE EDGES OF COMMON
- SHRUB PLANTING AT LOWER COMMON OBSTRUCTS VIEWS ACROSS COMMON

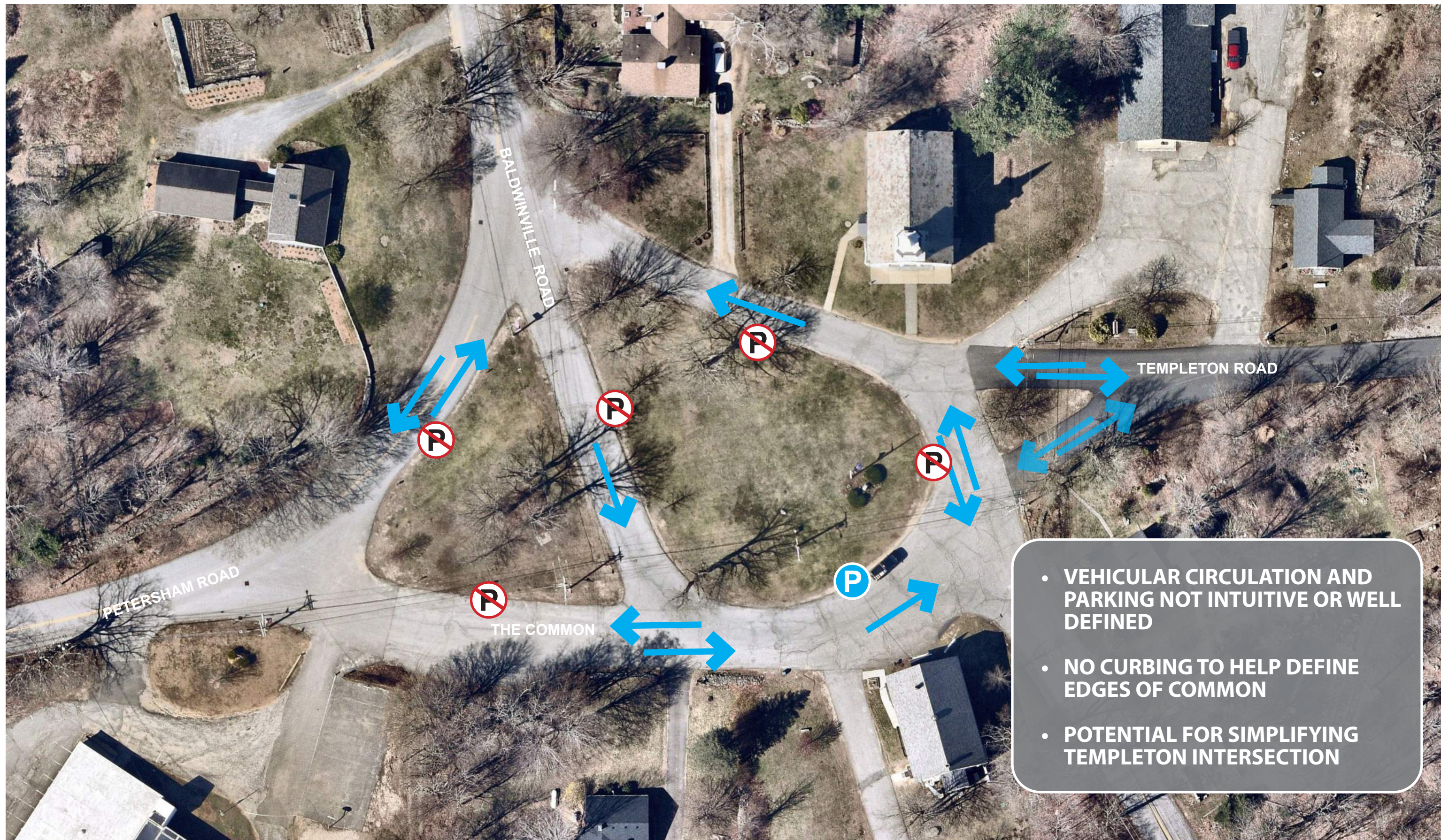


- REVIEW EXISTING ELECTRIC AND WATER NEEDS TO ENSURE THEY ARE ADEQUATE
- REMOVE ABANDONED INFRASTRUCTURE
- REVIEW FEASIBILITY OF REROUTING OVERHEAD WIRES AND UTILITY POLES

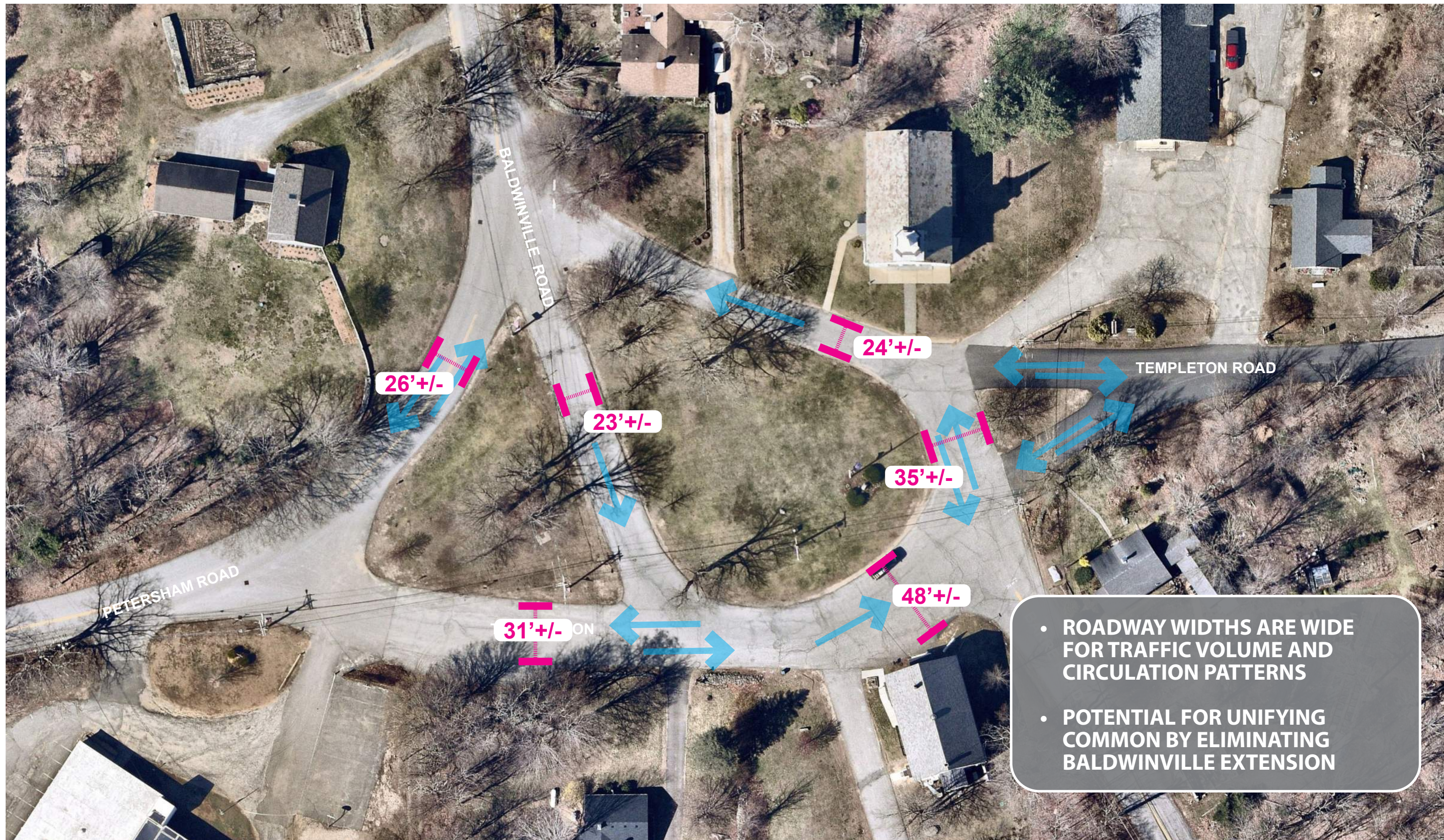
CONCRETE PAD WITH
ABANDONED CONDUIT

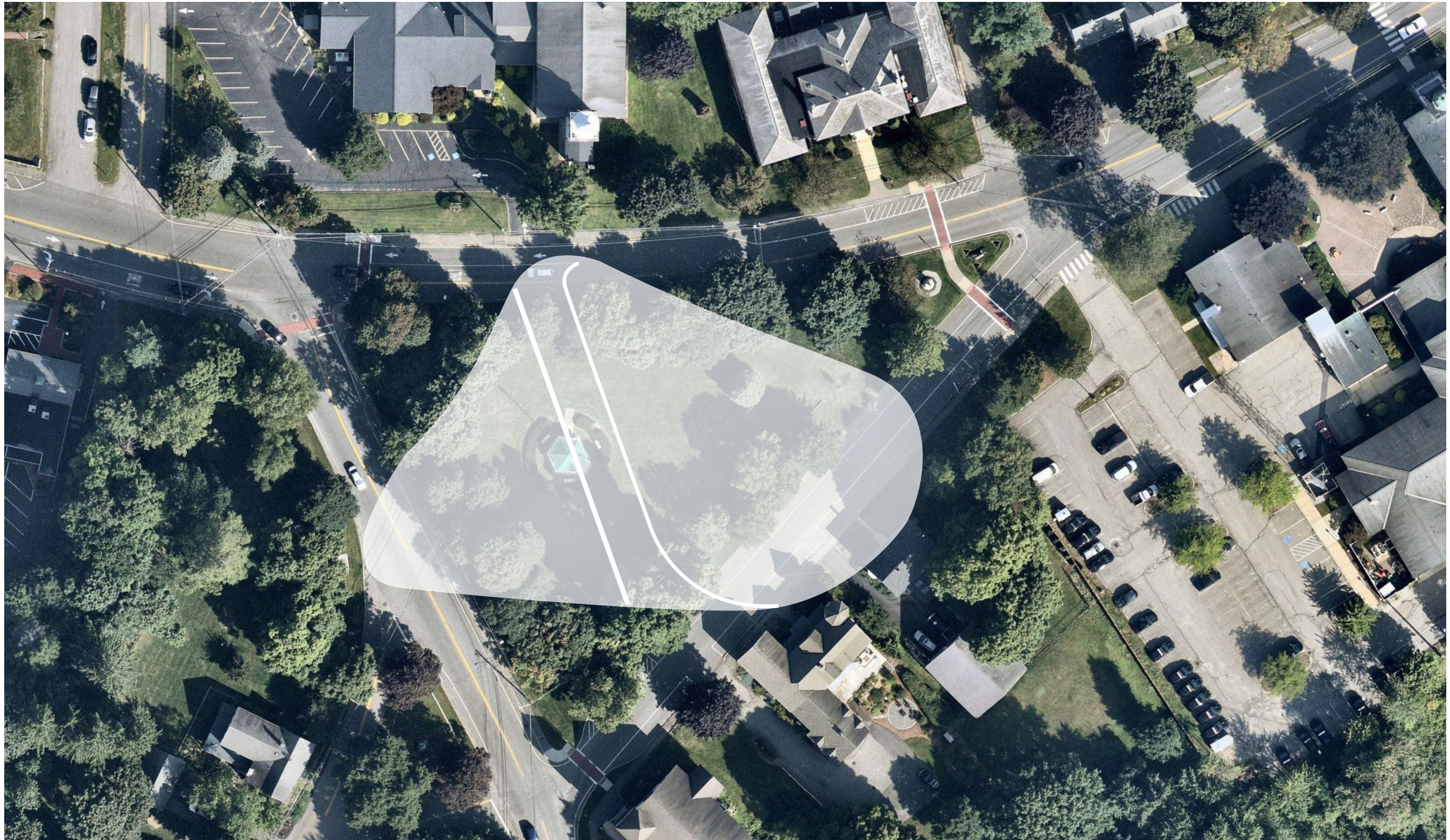
ELECTRIC METER AND
OUTLETS



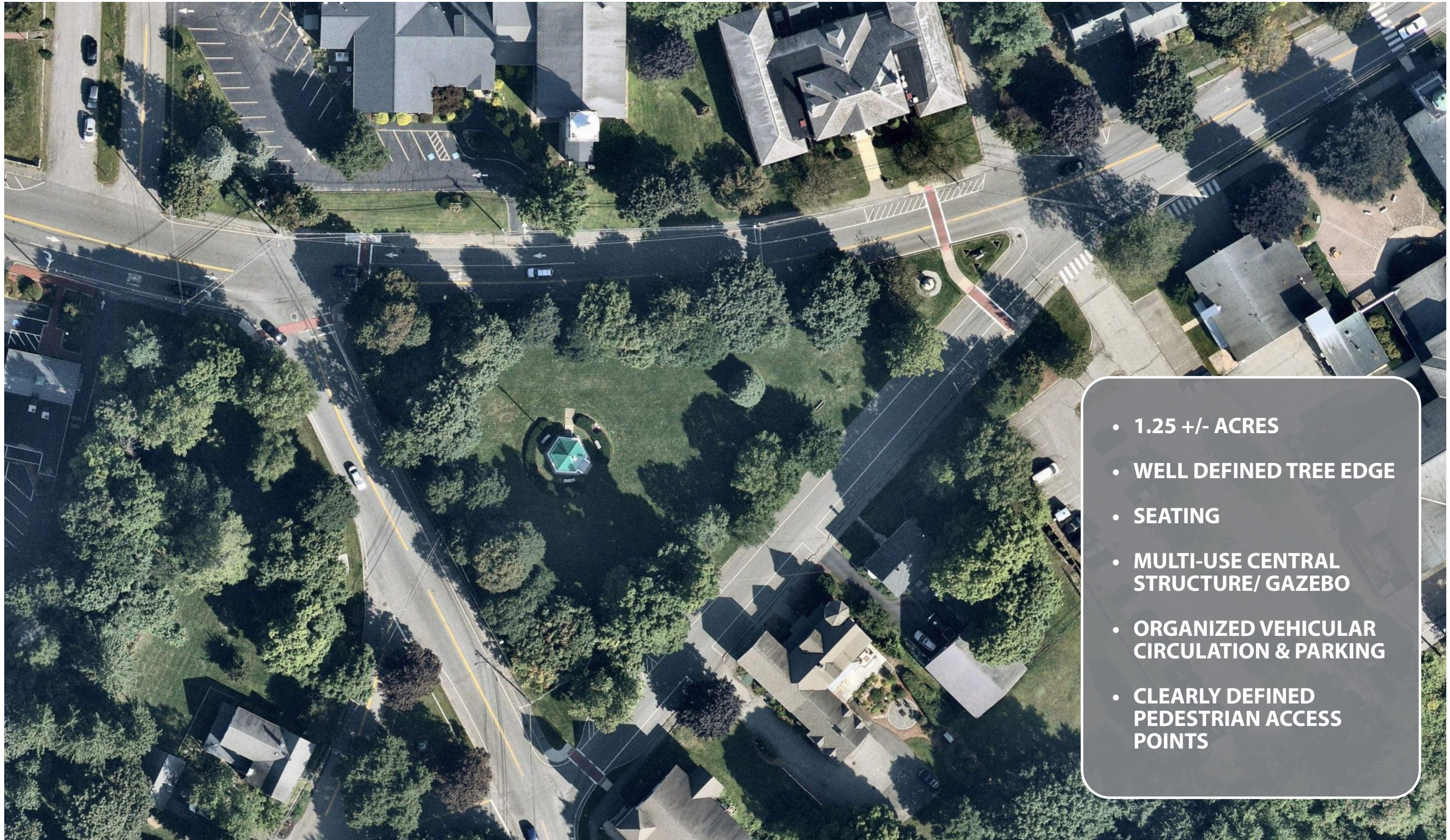


- VEHICULAR CIRCULATION AND PARKING NOT INTUITIVE OR WELL DEFINED
- NO CURBING TO HELP DEFINE EDGES OF COMMON
- POTENTIAL FOR SIMPLIFYING TEMPLETON INTERSECTION





PHILLIPSTON COMMON DESIGN STUDIES
PRECEDENT - WESTFORD TOWN COMMON



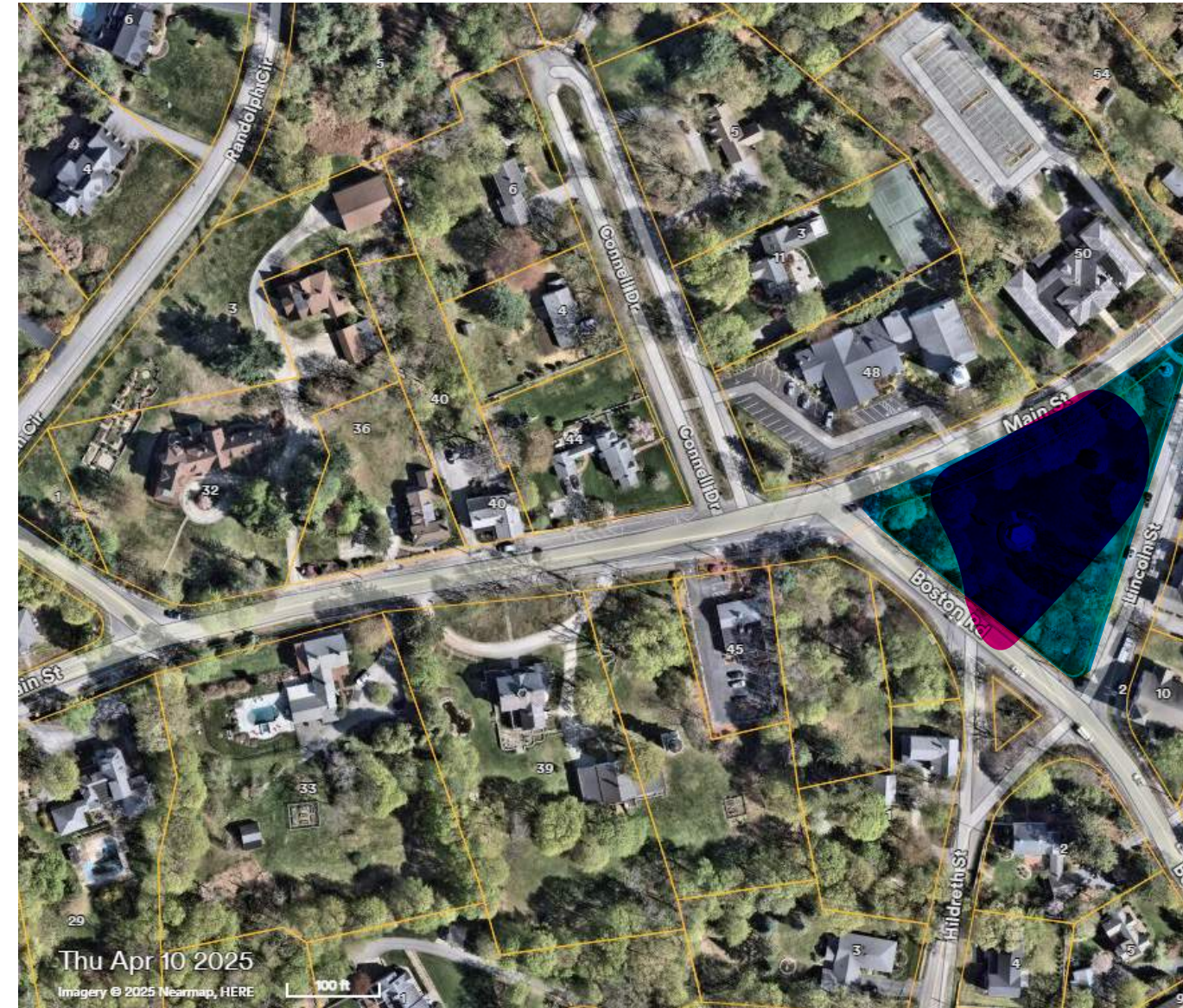
- 1.25 +/- ACRES
- WELL DEFINED TREE EDGE
- SEATING
- MULTI-USE CENTRAL STRUCTURE/ GAZEBO
- ORGANIZED VEHICULAR CIRCULATION & PARKING
- CLEARLY DEFINED PEDESTRIAN ACCESS POINTS



PHILLIPSTON COMMON DESIGN STUDIES
PRECEDENT - WESTFORD TOWN COMMON

- **PEDESTRIAN CIRCULATION IS NOT ORGANIZED OR CLEARLY DEFINED**
- **TREE PLANTINGS ARE NOT ORGANIZED - DO NOT DEFINE EDGES OF COMMON**
- **SHRUB PLANTING AT LOWER COMMON OBSTRUCTS VIEWS ACROSS COMMON**
- **REVIEW EXISTING ELECTRIC AND WATER NEEDS TO ENSURE THEY ARE ADEQUATE**
- **REMOVE ABANDONED INFRASTRUCTURE**
- **REVIEW FEASIBILITY OF REROUTING OVERHEAD WIRES AND UTILITY POLES**
- **ROADWAY WIDTHS ARE WIDE FOR TRAFFIC VOLUME AND CIRCULATION PATTERNS**
- **POTENTIAL FOR UNIFYING COMMON BY ELIMINATING BALDWINVILLE EXTENSION**

- **TOWN SIGN DIFFICULT TO SEE**
- **LITTLE HIERARCHY AND ORGANIZATION TO MARKERS AND MONUMENTS**
- **VEHICULAR CIRCULATION AND PARKING NOT INTUITIVE OR WELL DEFINED**
- **NO CURBING TO HELP DEFINE EDGES OF COMMON**
- **POTENTIAL FOR SIMPLIFYING TEMPLETON INTERSECTION**
- **ROADWAY WIDTHS ARE WIDE FOR TRAFFIC VOLUME AND CIRCULATION PATTERNS**
- **POTENTIAL FOR UNIFYING COMMON BY ELIMINATING BALDWINVILLE EXTENSION**
- **LACK OF SEATING**
- **NO MULTI-USE CENTRAL STRUCTURE/ GAZEBO FOR EVENTS**



PHILLIPSTON COMMON DESIGN STUDIES

