



How Can We Help You?

Building Blocks to a Successful Project.

Contech® prefabricated truss bridges are durable and aesthetic solutions. Prefabricated manufacturing means fast installation and substantial cost-savings. Contech truss bridges are typically erected and installed in one to three days, without the need for field welding. Contech truss bridges feature efficient bridge design and construction that is customized and manufactured to your specifications.

SOLUTION DEVELOPMENT	DESIGN SUPPORT	INSTALLATION
<ul style="list-style-type: none"> • Product Design Worksheet • Structure Selection • Siting & Layout • Design Your Own Bridge (DYOB®) • Engineer Estimates • Site Simulation • Proposal Preparation • Design Build Support 	<ul style="list-style-type: none"> • Specifications • Contract Drawings • Permitting Assistance • Structural/Fabrication Drawings • Approval Assistance • Custom Solutions • Horizontal/Vertical Alignment • Foundation Support 	<ul style="list-style-type: none"> • Preconstruction Meeting • On-Site Installation Assistance • Logistics Coordination



Steadfast Capstone®

Scottsdale, AZ



Steadfast Vehicular Steel Truss Bridges

Steadfast Bridges® are known for its safe, durable, affordable and aesthetic solutions. Steadfast truss structures are suitable for residential and commercial developments, Department of Transportation, municipal roads, parks and trails, as well as industrial and mining facilities.

Steadfast Bridges Offers:

- Clear spans to 200 feet
- Bolted or welded construction
- Weather, painted, or galvanized finishes
- 35 year galvanized warranty
- Aesthetic solutions
- Quick and straightforward installation with onsite support
- Improved hydraulics
- A variety of rail, deck, and finish options
- Extensive technical support
- Manufacturing with AISC major bridge certification
- Fracture critical and sophisticated paint coating endorsements



Steadfast Colonial Flat

Lansing, MI



Continental Pedestrian Steel Truss Bridges

Since 1972, Continental® has been North America's premier brand for pedestrian steel truss bridges. With more than 14,000 installations worldwide, Continental truss bridges are ideal for parks and trails, golf courses, skywalks, environmentally sensitive areas and developments.

Continental Bridge Offers:

- Clear spans to 250 feet and more. Spans greater than 250 feet with custom design
- Pedestrian crossings over highways, railroad tracks, rivers and wetlands
- Pre-fabrication allows for rapid installation
- Aesthetic solutions
- A variety of rail, deck, and finish options
- Extensive technical support
- Manufacturing with AISC Major/Intermediate bridge certification
- Fracture critical and sophisticated paint coating endorsements



Continental Capstone®

Alcoa, TN



Continental Thrust Arch

Las Vegas, NV



EXPRESS Connector®

Albuquerque, NM

Pre-Engineered AASHTO Pedestrian Bridges

The EXPRESS® Truss bridge is a pre-engineered pedestrian steel truss bridge designed for owners, engineers and contractors who know "time is money." This standardized truss system provides stamped drawings within one week after receipt of order and a bridge ready for shipment in less than eight weeks, significantly reducing construction time. The speed, quality and value of EXPRESS® bridges will ensure you receive the industry's best customer experience.

EXPRESS Truss Bridges Offer:

- Stamped drawings within 1 week after receipt of order
- Bridge ready for shipment within 6 - 8 weeks of approved drawings
- Quick and straightforward installation
- Designed in accordance with AASHTO
- IBC design is also available

REBUILDING OUR INFRASTRUCTURE

Municipalities & Counties

Time-sensitive projects and emergency bridge replacements often lead municipalities to a Steadfast vehicular or EXPRESS pedestrian truss structure. The clear span structures can improve hydraulics and minimize road and trail closure time with a quick installation, while fitting within a budget. Structures are typically installed in 1-3 days and require minimal maintenance.



Steadfast Capstone®

Rodanthe, NC



Continental Keystone®

Raleigh, NC



Continental Gateway®

Apopka, FL



Continental Capstone®

Beaver Creek, OH

HELPING TO KEEP AMERICA WORKING

Energy, Mining & Industrial

Continental steel truss structures have been utilized for pipe support, conveyor support and other elevated crossings. Steadfast vehicular structures, which meet AASHTO loading criteria, will accommodate large construction vehicles and equipment for the transport of heavy materials. The strength and durability of these systems allow for a wide range of unique solutions.



Continental Connector®

Morris, IL



Steadfast Link®

Baker, WV



Continental Connector®

Stephens Point, WI



Steadfast Capstone®

Haworth, NJ



Continental Custom Connector® Flight 93 Memorial – Shanksville, PA

ENJOYING LIFE & LEISURE

Park, Resorts, Trails, Golf Courses & MORE

Resorts, tourist attractions and signature golf courses all over the country have turned to Contech pedestrian and vehicular truss structures with a wide variety of styles, rail, deck and finishing options available. Contech was fortunate to have participated in providing the 800' long multi-span, Connector-style, Continental truss bridge at the site of the Flight 93 National Memorial in Shanksville, PA. The pedestrian bridge allows visitors dry passage over the wetlands area.



Continental Custom Natchez, MS



Continental Connector® Moab, UT



Continental Custom Gateway® Des Moines, IA



Continental Gateway® Dedham, MA

PROVIDING COMMUNITY SOLUTIONS

Residential & Commercial

Continental pedestrian and Steadfast vehicular truss structures have been selected by developers throughout the U.S. to provide practical, yet aesthetic structures in residential developments, hospitals, schools and communities. These structures are available in an array of style and finish options to provide a signature look as well as guarantee safe, reliable bridges for every day use.

Developers also look to Continental pedestrian and Steadfast vehicular truss solutions for busy commercial sites. Often times, these bridges are main entrances or centerpieces for business parks, shopping centers and local communities.



Continental Gateway® Moline, IL



Steadfast Colonial Harrison County, IN



Continental Custom Gateway® Warren, OH



Continental Cable-Stayed

Mishawaka, IN

Custom Designs & Signature Looks

Speciality truss bridges by Contech can be custom designed to specifically fit your project's needs. Our bridges have been successfully designed to replicate a particular bridge style or create a brand new signature look.

These custom options have included:

- Gangways onto floating docks, wildlife crossings, material handling and pipe support systems within buildings
- Bridges enclosed with stone, stucco, wood or other materials
- Multi-color paint systems and decorative lighting
- Cable-stayed bridges and skywalks
- Specialized railing, decking and finish options
- ADA accessible ramps
- Thrust arch, support towers and decorative towers



Continental Gateway®

Kissimmee, FL



Continental Gateway®

Daytona Beach, FL



Continental Connector®

Dulles, VA

Rail Options



Cable



Mesh Panels



Safety Rail/Wood Rub Rail



Vertical Picket/Pipe Handrail

Deck Options



Wood



Steel Grate



Concrete



Asphalt*

Finish Options



Weathering Steel



Painted Steel

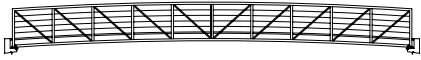


Galvanized Steel

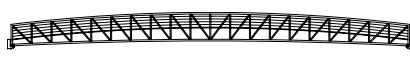


Continental® Pedestrian Truss Styles*

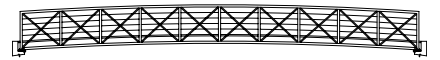
Connector®



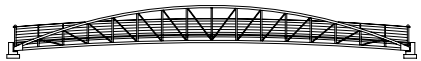
Capstone®



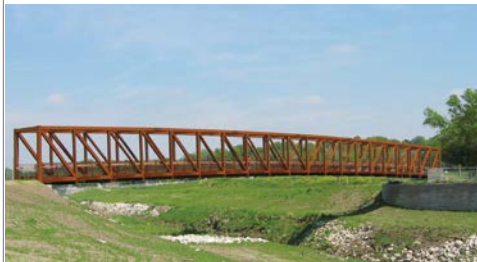
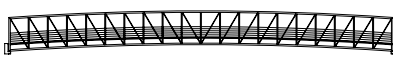
Link®



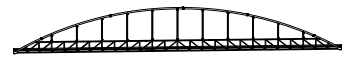
Keystone®



Gateway®



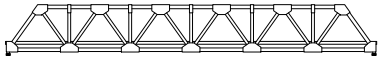
Tied Arch®



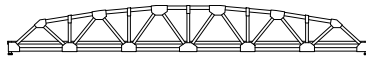
*Custom styling is available to make your project a reality (e.g. skywalks, cable-stayed bridges).

Steadfast Bridges® Vehicular Truss Styles

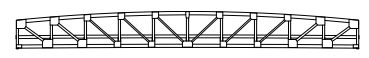
Colonial Flat



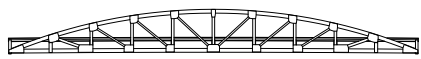
Colonial



Capstone®



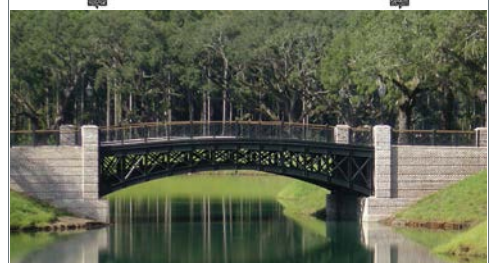
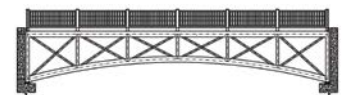
Keystone®



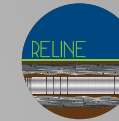
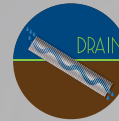
Horizon



Archway®



Contech® Engineered Solutions offers a full range of pedestrian and vehicular truss styles for your project's needs. As highly skilled solution providers, we are ready to support you in every phase of your project, from concept to installation.



STORMWATER SOLUTIONS

Helping to satisfy stormwater management requirements on land development projects

- Stormwater Treatment
- Detention/Infiltration
- Rainwater Harvesting
- Biofiltration/Bioretenion

PIPE SOLUTIONS

Meeting project needs for durability, hydraulics, corrosion resistance, and stiffness

- Corrugated Metal Pipe (CMP)
- Steel Reinforced Polyethylene (SRPE)
- High Density Polyethylene (HDPE)
- Polyvinyl Chloride (PVC)

STRUCTURES SOLUTIONS

Providing innovative options and support for crossings, culverts, and bridges

- Plate, Precast & Truss bridges
- Hard Armor
- Retaining Walls
- Tunnel Liner Plate

Contech Engineered Solutions is the nation's leading provider of site solutions products and services for the Civil Engineering industry.

With more than 40 manufacturing facilities across the United States and around the world, Contech has the resources to support every site development need.

**Visit us at www.ContechES.com or call
Toll Free: 800-338-1122**

**For more information, call one of Contech's
Regional Offices located in the following cities:**

Corporate - Ohio (Cincinnati)	513-645-7000
California (Roseville)	800-548-4667
Colorado (Denver)	720-587-2700
Florida (Orlando)	321-348-3520
Maine (Scarborough)	207-885-9830
Maryland (Baltimore)	410-740-8490
Oregon (Portland)	503-258-3180
Texas (Dallas)	972-590-2000

